



The American Brush Manufacturers Association (ABMA) is pleased to announce the following candidates for the coveted William Cordes Innovation Excellence Award, which is given to recognize outstanding innovation of manufactured products, components or services in the Broom, Brush, Mop and Roller Industry. The award is named after William Cordes, who served as the Association's first President from 1917-1928. This award serves as a constant reminder that all new and exciting endeavors have beginnings that connect with real people. The 2010 candidates are:

Shur-Line Deck Pads and Paint Pads with DuPont Teflon® Coating



Designed to be faster than a brush and smoother than a roller, SHUR-LINE Deck Pads and Paint Pads with Teflon® coating are perfect for exterior and interior projects. The coating also allows easy clean up as paint will not adhere to the surface, even after drying.



The Teflon coated pads allow for smoother coverage with more consistent load release and no pooling when compared to non-Teflon coated pads. The fibers remain soft for reuse and the pads are tear resistant. Consumers love the 9" size as it covers more area.

Wooster Brush

Alpha™

The professional paintbrush has been reengineered, and the result is unlike anything you've ever experienced. Brand new Wooster Alpha™ is the closest the industry has ever come to a universal brush. Alpha features Micro Tip™ technology to produce the finest finish available today.

Several years of development and analysis took place before this line was introduced; the new filament performed excellent across the board. Chuck Cline, Wooster brush development engineer, said, "Lab tests have proven that each style of Alpha paints at least 30% further than other brushes of equal size." The Micro Tip filaments virtually eliminate brushmarks. Painters were enlisted to try Alpha in the field; Cline found their reactions quite interesting. "One group of contractors who were given the brushes wouldn't give them back. They said it was because they couldn't wear them out," Cline exclaimed.



From the first dip Alpha brushes show just how well they deliver coatings to the wall. Alpha has an unbeatable capacity and release percentage. Designed to carry more paint in the end of the brush, Alpha releases a larger amount of paint to the surface without needing to push as hard. This allows coatings to flow evenly to the working surface and avoids the inconvenience of dripping. They also clean quickly and easily when the work is done. Overall, Alpha gives painters better results with less effort—improving production.

While Wooster is known for precisely tapered brush design, Alpha has a fuller end that eliminates drag and continues to offer exceptional Wooster control. "The tips on Alpha are so soft and supple and allow so much manipulation that it almost feels like an artist brush. Now you can cut-in with what was once considered a huge brush. You can't do that with a competitor's brush—it just doesn't happen," Cline stated.

For years painters have requested to have all the qualities they want in one brush; the creation of Alpha has made this a reality. "It's definitely the new direction for the brush industry. I've seen a lot of paintbrushes and there's nothing even close to this out there," Cline concluded.

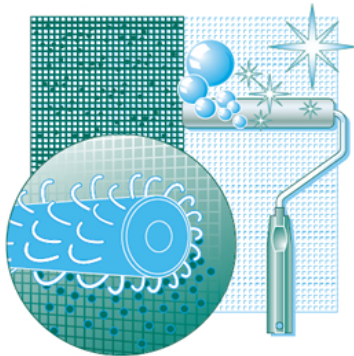
Wooster Alpha brushes are made for use with all paints and are available in angle sash, Shortcut®, thin angle sash, flat sash, varnish, semi-oval, and wall styles. Each brush has a stainless steel ferrule and a sealed maple wood handle.

Linzer Products ScreenKleen™

Clean window and door screens without removing them!



- Never Wrestle with Screen Removal or the Mess of Spraying Screens with a Garden Hose Again
- Clean Each Individual Mesh and Do It From inside Your Home or Office
- Use a Dry or Moist Clean Cloth and Wipe the Soapy Water off the Screen
- Fast, Easy and Reusable



Specially Formulated &
Patented Micro Dart
Technology Penetrates
Each Mesh Removing
Dirt, Grime and Allergens



Shur-Line Eco Applicators™

SHUR-LINE has introduced eco products made from recycled and renewable materials to help reduce the impact of home renovation projects on the environment.

The handles of SHUR-LINE's new eco brushes are 100% bamboo, a renewable material. The bristles are 100% recycled polyester and the metal ferrule that holds the bristles in place is made from recycled aluminum. Also, the packaging is made from 100% recycled material. These high quality brushes are suitable for use with all paints and provide one-coat coverage.

SHUR-LINE's new eco roller covers are made of 100% recycled materials and the packaging is biodegradable. The premium roller covers work with all paints and stains and also provide excellent one-coat coverage.

The eco paint products can be cleaned after each use allowing them to be reused for multiple paint projects.



Zahoransky AG Shuttle System Fully Automatic Mold Injection Cell For Broom and Brush Bodies



The Zahoransky Shuttle System is a fully automated cell to produce mould-injected parts 24 hours, 7 days a week and is now the proud recipient of the 2009 FEIBP Innovation Award as announced at last week's FEIBP Congress in Bristol, UK.

It combines maximum flexibility in production planning with an efficient way to reduce production costs. Two already-installed systems at famous German brush and broom manufacturers enable the customer to compete against exporters from low-wage countries by the enormous drop of costs per piece. The high flexibility of the Shuttle System lowers the lead time and reduces the stock of inventory which, in the case of using conventional mould injection units, has to be maintained to avoid expensive changeovers from one product to another.

Description:

The system runs 3 to 4 process cycles (injection, cooling, ejection, sorting) parallel instead of successively. It allows the production of up to 17 samples of different shapes and colours at the same time and in any order. Production planning software controls the product and allows for production as put into ERP system (amount, priority). The system uses standardised moulds to give maximum flexibility and to eliminate any change-over times.

The Shuttle System reduces the overall cycle time by 50 to 80%, saves operator costs by 33% and reduces space requirements. No change-over and colour change times are to be taken into consideration. The system is flexible and enables the user to produce plastic parts just in time and on demand. Costs per piece can be reduced dramatically.

Process benefits:

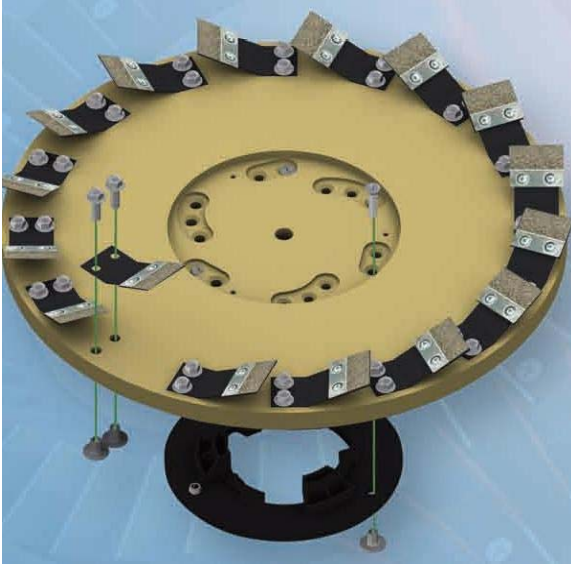
- * 24/7 fully automated operation without operator.
- * Automated job processing of up to 24 different products in up to 5 colours and use of recycled material at the same time.
- * Possibility to channel in production snapshots without loss in efficiency.
- * Production just-in-time & on-demand.
- * Cycle time = injection time.

Financial benefits:

- * Reduction of cycle time 50-80%.
- * Reduction of change over times by 100%.
- * Reduction of colour change times by 100%.
- * Personnel savings by 50%.
- * Savings in space by 50%.

Malish Corporation Diamabrush™





A REVOLUTION IN FLOOR PREPARATION TECHNOLOGY

Diamabrush™, is a unique diamond abrasive floor preparation system for concrete floor polishing, mastic removal and hardwood prep.

The Diamabrush™ System is comprised of four different tools, each designed to be used on standard low pressure commercial cleaning machines including single discs, walk behind auto scrubbers and ride-on auto scrubbers.

CONCRETE TOOL

The Diamabrush™ patented, metallic blade is the first of six steps, to a rejuvenated concrete floor. A 100 diamond grit is bonded to metallic backing and assembled to flexible, spring-steel blade. The flexible blade allows the diamond to remain in constant contact with the floor, maximizing the tools effectiveness. New diamond particles are continuously exposed, retaining sharp edges throughout the life of the tool.

This tool abrades existing epoxy floors, effectively preparing it for the re-coat application.

POLYMER TOOL

The Diamabrush™ Polishing System is the most significant innovation in concrete polishing in the last 50 years.

The System transforms ordinary cleaning machines into concrete polishing machines through everyday cleaning routines. No need for heavy, expensive equipment or harsh chemicals.

Progressing thru a series of increasing finer diamond grits, the pores of the concrete are progressively closed, ultimately resulting in a retail-like finish.

The multi-step system provides the flexibility for the user to choose how many steps are needed to achieve the desired surface finish.

HARDWOOD PREP TOOL

The Diamabrush™ Hardwood Prep Tool is the First Step to rejuvenated hardwood floors! The Diamabrush™ Hardwood Prep Tool is designed to remove polyurethane and carpet adhesives from hardwood floors, effectively preparing the floor for re-finishing.

The diamond cutting surface remains free of melted or gummed up coatings and retains its sharp cutting points throughout the life of the tool.

MASTIC REMOVAL TOOL

The Diamabrush™ Mastic Removal Tool is designed to remove stubborn coatings from concrete, such as mastic, carpet or tile adhesive, thin-set and thin mil coatings like urethane or paint. No need to waste time and money on heavy grinding equipment or harmful chemicals. This diverse tool, which mounts to any standard floor buffer or auto scrubber, uses diamond coated blades to grind tough coatings away!

User safety is greatly enhanced since dangerous and volatile chemicals are not required. Simply apply water to eliminate dust and to flush debris away.

Rejuvenate concrete and hardwood floors with Diamabrush™ by Malish.

These unique and innovative products will be on display at the 93rd Annual ABMA Convention, March 17 – 20 at the Omni Orlando Resort at ChampionsGate in Orlando, FL. Please visit: <http://www.abma.org/> for additional membership and convention information.

For additional information, please contact:
American Brush Manufacturers Association – ABMA
2111 Plum Street, Suite 274, Aurora, IL 60506-3268
630 631-5217 T, 866 837-8450 F, info@abma.org